

vax®

VAX SpotWash

Spot Cleaner



Safety Guide

This machine is intended for household use only, not for commercial or industrial use.

Please keep instructions for future use. Use only as instructed in the user guide.

The full user guide can be found at: support.vax.co.uk

Don'ts

- Don't leave the machine plugged in when unattended.
- Don't use the machine if it has been dropped, damaged or left outdoors.
- Don't use the machine if the power cord or plug is damaged. If the power cord is damaged, it must be replaced by a qualified person in order to avoid a hazard.
- Don't vacuum up any flammable or combustible materials (lighter fluid, petrol, kerosene etc.) or use the machine in an area with explosive vapours or liquid.
- Don't use the machine outside during wet weather conditions.
- Don't handle the plug or use the machine with wet hands.
- Don't pull or carry the machine by the power cord.
- Don't use the machine to pick up hot coals, cigarette butts, matches or smoking hot burning items or use in an area where there may be harmful fluids (chlorine, bleach, and ammonia drain cleaner).
- Don't use the power cord as a handle, pull the power cord around corners, sharp edges or close a door over the power cord.
- Don't unplug the machine by pulling on the power cord.
- Don't carry the machine while it's switched on.
- Don't attempt to remove blockages with sharp objects as this may cause damage to

Do's

Refer to the floor/surface manufacturer's care recommendations before use. Test your flooring/surface - run the machine over a small hidden area, if no damage or discolouration occurs continue cleaning. Not suitable for use on water sensitive flooring/surfaces.

- The clean water tank should be filled with warm water (max 40°C) only. Filling the clean water tank with hot or boiling water will damage the machine and invalidate the guarantee. Always use the machine with all water tanks and filters in place.
- Always keep the area you're cleaning well lit.
- Always replace the fuse in the plug with a British 13amp fuse.
- Always unplug the machine before carrying out any maintenance and before connecting or disconnecting the accessories.
- Take extra care when cleaning on the stairs.
- Turn off all controls on the machine before disconnecting or connecting the power cord. After use always wrap the power cord around the cord clips provided.
- Always protect the power cord from heated surfaces and open flames.
- Use only CE/UKCA approved 13amp extension cords, non-approved extension cords may overheat. Care should be taken to arrange the extension cord as it can be a trip hazard.
- Keep all openings clear and free from debris as this may affect the airflow/suction/water pick up.
- Always use the machine in an upright position. To prevent motor damage from dirty water, never hold the machine upside down or on its side.
- Store the machine in a cool, dry area. Before storing the machine please ensure all water/solutions tanks are empty and filters are thoroughly clean and dry.

Basic Safety Precautions

- This machine is intended for indoor cleaning and vehicle interiors during dry weather conditions.
- Keep fingers, hair and loose clothing away from moving parts and openings whilst using the machine.
- Before using the machine test your carpets/rugs/upholstery for colourfastness and pile distortion.
- This machine is not intended to be used or cleaned by persons with reduced physical, sensory or mental capabilities, or lack of experience or knowledge, unless they have been given instructions concerning the safe use of the appliance by a person legally responsible for their safety. They should be supervised whilst using the appliance. Children shall not use, clean or play with this appliance, which when not in use should be secured out of their reach.
- Only Vax recommended tools and solution should be used with this machine. Using other solutions may invalidate the guarantee.

Welcome to the Vax family!

You are now the proud owner of a VAX SpotWash.

Here, you'll find everything you need to know about your machine and, most importantly, instructions on how to get started so that you can get cleaning!



- 1 Carry handle
- 2 On/Off button
- 3 Clean water/solution tank
- 4 Dirty water tank
- 5 Wash tool
- 6 Hose self clean port
- 7 Hose end clip
- 8 Wash tool release button
- 9 Quick cord release hooks
- 10 Hose
- 11 Hose clips
- 12 Everyday 2-in-1 Tool with:
 - A. Multi-purpose Brush Attachment
 - B. Hard Floor Scrub Attachment
- 13 Messy Clean Up Tool* with
 - A. Multi-purpose Brush Attachment* (Dark grey)
- 14 250ml Spot Washer Solution



**Weight 3.9kg. Dirty water tank capacity 1L.
Clean water/solution tank capacity 1.5L. Cord length 4.5m.**

*Included with model CDCW-CSXA only.

Subject to technical change without notice. Images are illustrative only.

Quick Start

1 Assembly

Slide the wash tool onto the hose end until it clicks into place.



2 Getting started

Fill the solution tank with warm water (max 40°C) and solution.



3 Operation

Press the On/Off button to switch the machine on.



Registration and Support

Claim your free 2 year guarantee†

For details visit: vax.co.uk/registration

Scan here



For help and support with your new product

or visit us online: support.vax.co.uk

Still need to get in touch?

Our UK based Customer Care Team are here to support you. For help with assembly, operational or performance problems, or buying and fitting new accessories, you can find all our contact details at vax.co.uk/contact

This user guide can be found online at: support.vax.co.uk

† Registration required. Terms and conditions apply, see vax.co.uk for details.

Warranty and technical

Warranty

If a Vax machine is used in the way it is intended and it breaks down within the guarantee period, it's our responsibility to repair or replace it.

Here's what isn't covered:

- Functional parts, tools and accessories after 12 months that may suffer premature failure due to every day wear and tear.
- Consumables after 3 months such as belts, filters, brushbars, fuses etc.
- Accidental damage.
- Cosmetic damage that does not affect the functioning of the product.
- Damage as a result of use not in accordance with the user guide.
- Damage caused by not carrying out regular maintenance.
- Damage to the cable.
- Blockages; please refer to the user guide.
- Poor product performance caused by:
 - Negligent use, misuse or careless operation of the machine.
 - Failure to clean or maintain the product in accordance with the user guide.
 - Use of the machine which is not in accordance with the user guide.
 - Use of a Vax product for anything other than normal domestic household purposes in the country in which it was purchased.
 - Use of parts, accessories and consumables, which are not genuine Vax components.
 - Faulty installation or repairs - unless carried out by a qualified electrician or engineer.

Technical

Statement of Compliance: Manufacturer/EU importer: Vax Limited, hereby on our own responsibility, declare that the **VAX SpotWash** series is manufactured in compliance with the following Legislation:

Safety: 2014/35/EU Low Voltage Directives/Electrical Equipment (Safety) Regulations 2016. EMC: 2014/30/EU Electromagnetic Compatibility Directive/ Electromagnetic Compatibility Regulations 2016.



Waste electrical products should not be disposed of with household waste. Please recycle where facilities exist. Check with your Local Authority or retailer for recycling advice.

Vax is a trade mark of Techtronic Cordless GP.

© 2021 Techtronic Cordless GP. All rights reserved.

Vax Ltd, Artillery House, Heritage Way, Droitwich, WR9 8YB, UK.

Assembly

PLEASE READ THE SAFETY GUIDE BEFORE USE.



Hook the hose clips onto either side of the machine and push to click into place.



Unclip the hose end from the back of the machine.



Wrap the hose around the machine and push the hose into the clips.



Slide a wash tool onto the hose end until it clicks into place.



Push the hose end into the clip on the back of the machine.



Wrap the cord around the quick cord release hooks.

Using your machine

IMPORTANT: Test all carpets/rugs/upholstery/hard floors before use. Before using the machine to clean dried on stains and dirt, the surface should be vacuumed thoroughly.

Test for colourfastness - Wet a white absorbent cloth with the solution. In a small hidden area of the surfaces to be cleaned, gently rub with the dampened cloth. Wait ten minutes and check for colour removal or bleed with a white paper towel or cloth. Check all surfaces to be cleaned and if the surface has more than one colour, check all colours.

Test the spot washer on a small hidden area - If no damage or pile distortion occurs continue cleaning.

Move furniture out of the area to be cleaned. If the furniture cannot be moved, place aluminium foil or wax paper under the legs. This will prevent wood finishes from staining your carpet. Pin up furniture skirts and curtains.

When using the spot washer, basic safety precautions should always be observed and don't over saturate your carpets/rugs/upholstery/hard floors.

Only use with VAX Spot Washer Cleaning Solution or VAX Spot Washer Antibacterial Cleaning Solution. Using other solutions may cause excess foaming and will invalidate your guarantee.

The clean water/solution tank should only be filled with warm water (max 40°C). Filling the clean water/solution tank with hot/boiling water will damage your spot washer and invalidate the guarantee.

Filling the clean water/solution tank



Press the clean water/solution tank release button. Pull and lift to remove the tank.



Unscrew the cap out of the clean water/solution tank.



Fill the tank with warm water (max 40°C) and solution to the desired clean level, indicated by the lines on the tank, or as follows:

Large area clean
1L of water with
250ml solution.

Small area clean
500ml of water with
125ml solution.



Screw the cap back onto the clean water/solution tank.



Refit the clean water/solution tank onto the machine so it clicks into place.

Operation



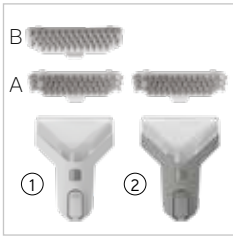
Turn the quick cord release hook and remove the cord.



Plug the machine into the mains and switch on.

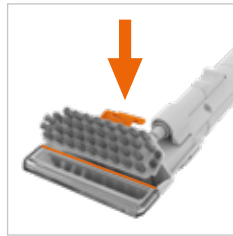


Unclip the wash tool and lift the hose out of the clips.



- ① **Everyday 2-in-1 Tool**
For cleaning carpets, rugs, sofas and upholstery.
- ② **Messy Clean Up Tool***
*Model CDCW-CSXA only.
(Blue/dark grey attachment).
A spare cleaning tool to keep messy clean ups separate from every day cleaning.

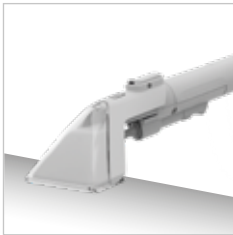
(A) Multi-purpose brush for cleaning carpets, rugs, sofas and upholstery. **Included with both tools.**
(B) Hard floor scrub attachment for cleaning tiles and sealed wooden floors. **Included with Everyday 2-in-1 tool only.**



Fit the front of the selected attachment into the front of the wash tool and push the clip down to click into place.



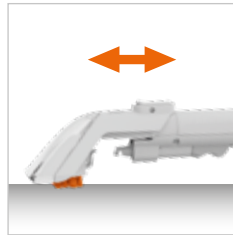
Press the on/off button to switch the machine on.



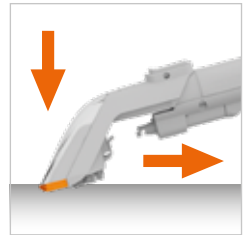
For spills, always pick up the excess liquid before using water/solution. Tilt the tool forward on to the spill and pull back.



Press the trigger on the wash tool to release water and solution.



Use the brush to agitate any stubborn stains.



Release the trigger and tilt the nozzle forwards so the nozzle is in contact with the surface. Pull back to recover the water and solution.

IMPORTANT: Over or under tilting the hand tool may result in poor water pick up.



Maintenance and cleaning

IMPORTANT: Unplug and switch off the machine before performing maintenance or troubleshooting checks.

Emptying and cleaning the dirty water tank

IMPORTANT: Empty and rinse out the clean water/solution tank and dirty water tank and leave to air dry before refitting.

The dirty water tank is fitted with a float. When the dirty water tank is full, the float will shut off the suction on the machine. You will be able to hear if this has happened as the motor noise on the machine will increase. Once the float is activated, empty the dirty water tank if full. If the dirty water tank is not full then turn off your machine at the power switch and wait for the float to settle.



Press the dirty water tank release button. Pull and lift to remove the tank.



Lift the dirty water tank clip and unhook to release the lid.



Lift the lid to remove from the dirty water tank.



Empty the dirty water into the sink or toilet.



Rinse the dirty water tank and lid under water (max 40°C) to remove dirt/debris.



To refit the lid, hook the tab on the front of the lid into the tab on the tank and close in a hinge like manner.



Hook the clip on to the lid and push down to lock into place.



Refit the dirty water tank onto the machine so it clicks into place.

Maintenance and cleaning

IMPORTANT: The motor is equipped with a thermal cut-out. If for any reason the machine should overheat, the thermostat will automatically turn the machine off. Switch off and unplug the machine. Check the machine for blockages and remove before restarting your machine.

Hose self clean function

IMPORTANT: Use the hose self clean function after each use to remove any water or debris left in the hose.



Press the clean water/solution tank release button. Lift and pull to remove the tank.



Unscrew the cap and fill the clean water/solution tank with approximately 1 inch of warm water (max 40°C). **DO NOT ADD SOLUTION.**



Screw the cap back on and refit the clean water/solution tank onto the machine so it clicks into place.



Press the wash tool release button and pull to remove the tool from the hose end.



Push the hose end into the hose self clean port.



Switch the machine on and hold in place until the clean water tank has emptied. Do not squeeze the trigger. Repeat as necessary.



Press the dirty water tank release button. Pull and lift to remove the tank.



Lift the dirty water tank clip and unhook to release the lid.



Lift the lid to remove from the dirty water tank.



Empty the dirty water into the sink or toilet.



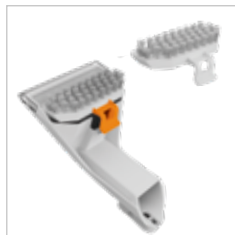
Rinse the dirty water tank and lid with warm water (max 40°C) to remove dirt/debris.

Maintenance and cleaning

Removing and cleaning the wash tools and attachments



Press the wash tool release button and pull to remove the tool from the hose.



Pull and lift the clip to remove the attachment.



Press the clip to remove the nozzle.



Rinse the tool, attachments and the nozzle under warm water (max 40°C) to remove dirt/debris.



To refit, slide the nozzle onto the wash tool until it clicks into place.

Cleaning the filter grill



Press the dirty water tank release button. Pull and lift to remove the tank.



Remove any dirt and debris from the filter grill located underneath the dirty water tank.

WARNING: Always switch off and unplug the machine before performing any checks or maintenance.

There is an accessory missing

- Check the contents on the box to make sure the part is definitely included with your machine.
-

Why does the machine have no power?

- The plug may not be fully pushed into the electrical socket.
 - The fuse in the plug may need replacing. Always replace with a British 13amp fuse.
 - The motor is equipped with a thermal cut-out. If for any reason the machine should overheat, the thermostat will automatically turn the machine off. Switch off and unplug the machine. Check the machine for blockages before restarting your machine.
-

Why won't the water/solution dispense?

- Squeeze the trigger on the hose to release solution and water mix. **See Operation page 7.**
 - Make sure the clean water/solution tank is fitted securely. **See Operation page 7.**
 - The clean water/solution tank is empty. Refill the tank. **See Operation page 7.**
 - The clean water/solution tank valve may be stuck, hold the tank over the sink and press the valve underneath to release.
 - Air is trapped in the pump and hose. Switch on the machine, prime the pump by lowering the hose down to the floor and hold the trigger for up to 1 minute.
-

Why won't the machine pick up?

- The float in the dirty water tank may have been activated. Empty the dirty water tank and wait for the float to settle before restarting your machine.
- The nozzle may not be in contact with the surface, tilt the nozzle forwards. **See Operation page 7.**
- Check the hose for blockages and clear. **See Hose self clean function page 9.**
- Check the wash tools for blockages and clear. **See Removing and cleaning the wash tools and attachments page 10.**
- The dirty water tank may not be assembled correctly or the lid may not be fitted securely.
See Emptying and cleaning the dirty water tank page 8.
- Check the wash tool and nozzle is correctly fitted. **See Assembly page 5.**
- Check the filter grill located under the dirty water tank for dirt and debris. **See Cleaning the filter grill page 10.**

For how-to videos and
warranty registration visit
www.vax.co.uk

support.vax.co.uk

Vax Ltd, Artillery House, Heritage Way, Droitwich, WR9 8YB, UK.