



Hello!

Let's begin your journey...



...it's easy with Genie

Getting started...

Hello from the clean Genie team!

Thanks for choosing us. We're here to make cleaning simple for you.

We're not about fuss, so of all our products are really straightforward and easy to use.

Just follow our quick steps to build it up and go.

We'd love to stay in touch, so please take a moment to **register your Genie** so we can let you know all about the fun stuff we do. Find us online at www.thegenierange.co.uk for lots more info and tips, or if you get stuck call our Helpline on **08448 11 22 80**.

Now open the page and we'll have your Express Wet & Dry up and running in minutes. **Enjoy!**



Safety information


When using the wet and dry handheld, basic safety precautions should always be observed, including the following:


 **Warning:** Do not use outdoors.

1. Do not charge the unit outdoors.
2. Turn off the handheld before connecting to or disconnecting from an electrical socket.
3. Children should be supervised to ensure that they do not play with the handheld.
4. This appliance is not intended for use by persons (including children) with reduced physical, sensory or mental capabilities, or lack of experience and knowledge, unless they have been given supervision or instruction concerning the use of the appliance by a person responsible for their safety.
5. Only use as described in this manual. Only use the manufacturer's recommended attachments.
6. Do not use the wet and dry handheld if it has been dropped, damaged, left outdoors or dropped into water. Do not use the charger with a damaged cord or plug. If the charger is damaged, it must be replaced by the manufacturer or a recommended Service Agent to avoid hazard and invalidating the guarantee.
7. Do not abuse the cord. Keep the cord away from heated surfaces.
8. Do not handle the plug or cord with wet hands.
9. Do not throw batteries into fire or expose them to high temperatures as they may burst.
10. Do not use with any opening blocked; keep free of dust, lint, hair and anything that may reduce air flow.
11. Keep hair, loose clothing, fingers and all parts of the body away from openings and moving parts.
12. Do not pick up hot coals, cigarette butts, matches or anything hot, smoking or burning objects.
13. Do not pick up flammable or combustible materials (lighter fluid, petrol, kerosene etc.) or use in the presence of explosive liquids or vapour.
14. Do not vacuum up harmful or toxic material (chlorine, bleach, ammonia, drain cleaner etc.).
15. Do not use without the filter in place.
16. Do not vacuum up hard or sharp objects such as glass, nails, screws, coins, etc.

Please only use in your home.
Keep instructions for future reference.


17. Turn off all controls before unplugging.
18. Take extra care when cleaning on stairs.
19. Store the appliance indoors in a cool, dry area.
20. Only use the charger supplied by the manufacturer to recharge.

 **Warning:** Always switch off and unplug the handheld from the electrical socket before assembling, opening or emptying the dirt container, or before connecting/disconnecting the attachments or performing any maintenance.

 **Important:** Remove the battery from the appliance before recycling. For further information please contact your local waste management centre.

Battery maintenance

Disposal

 **Important:** The wet and dry handheld contains a battery that must not be disposed of in your domestic waste. Check with your Local Authority for recycling advice.

Removing the battery

- Never short-circuit the battery, i.e. never touch both poles simultaneously, especially with metal objects.
- Never dismantle the battery.
- Never expose the battery to high temperatures.
- Improper handling can lead to liquid leaking from the battery. This can cause skin irritations. Avoid any contact with the fluid.
- If it becomes necessary to replace the battery, please contact the Genie Helpline.
- Do not replace the battery with a battery of a different type.

EEC Statement of Compliance

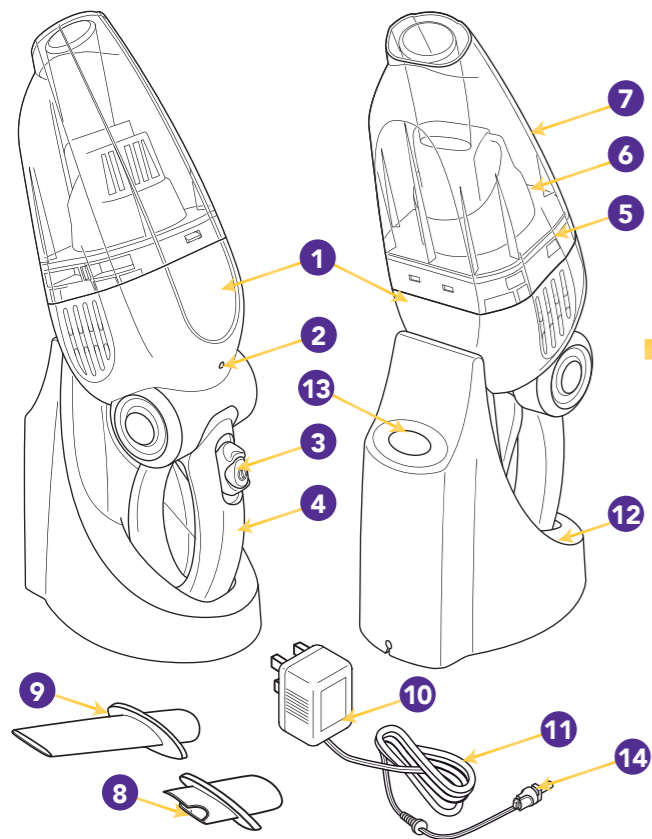
Manufacturer/EEC importer: Genie hereby on our own responsibility, declare that the GUV-04 series is manufactured in compliance with the following Directives: Safety: 2006/95/EC Low Voltage Directive, EMC: 2004/108/EC Electromagnetic Compatibility Directive


Disposal

This product should not be disposed of with the house-hold waste. Please recycle where facilities exist. Check with your Local Authority or retailer for recycling advice.

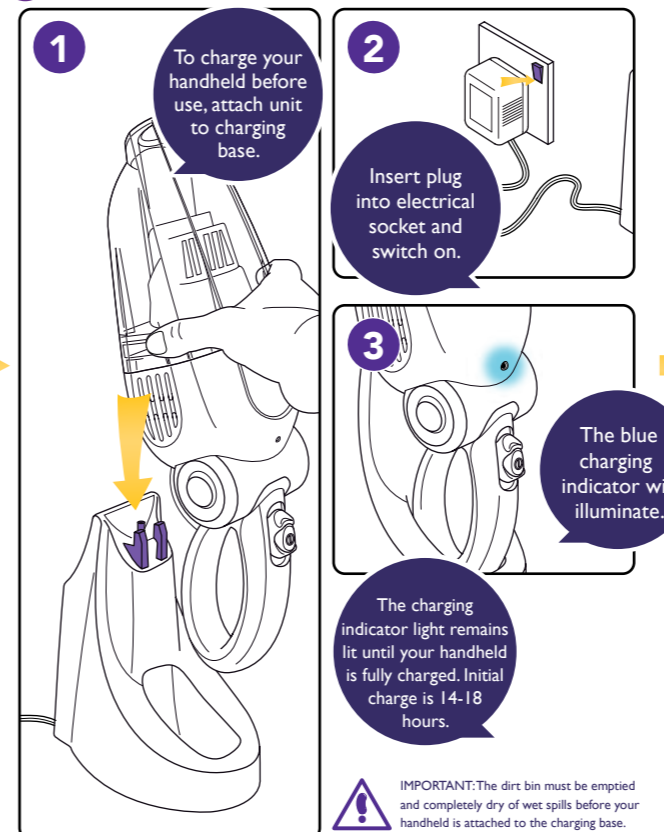


What's in the box?

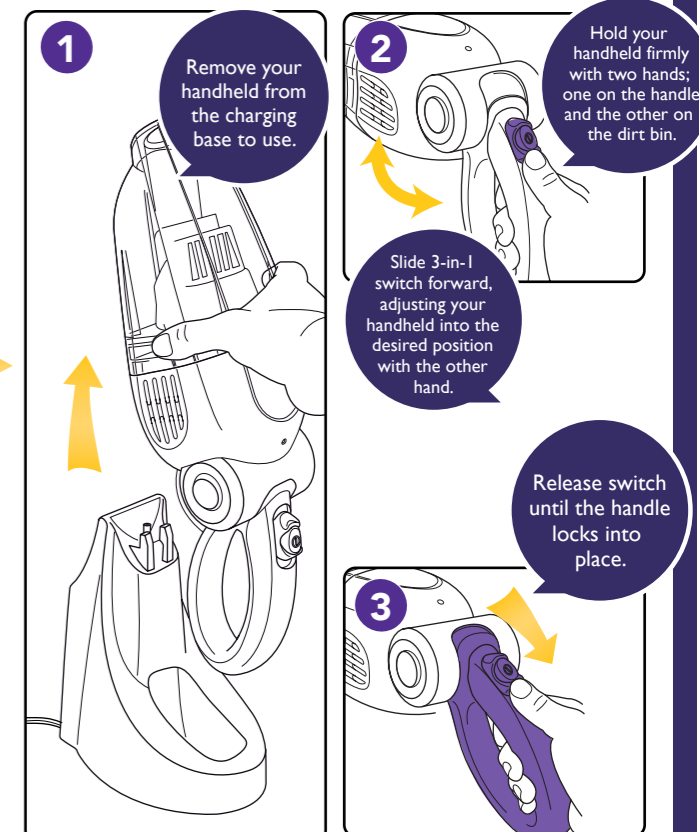


- 1 Wet and dry handheld
- 2 Charging indicator light
- 3 3-in-1 switch:
 - On/off (press )
 - Bend handle (push forwards)
 - Release dust container (pull backwards)
- 4 Handle
- 5 Pre-motor filter (hidden)
- 6 Filter cage
- 7 Dirt bin
- 8 Nozzle (for wet spills)
- 9 Crevice nozzle (for dry vacuuming)
- 10 Plug
- 11 Power cord
- 12 Charging base
- 13 Nozzle storage
- 14 Mains adapter

Build me up!



It's as easy as...



It's as easy as...

Dry spill pick up



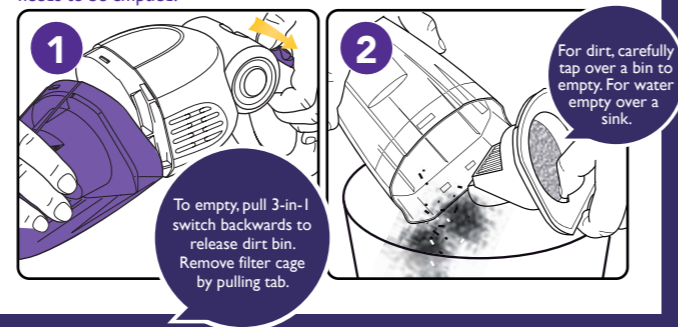
Wet spill pick up



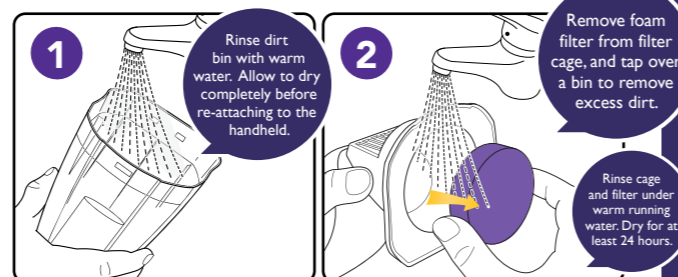
IMPORTANT: The dirt bin must be emptied and completely dry of wet spills before your handheld is attached to the charging base.

Empty me!

Note: When 'max' mark on the dirt bin is reached, your handheld needs to be emptied.



Look after me!



Note: To put your handheld back together, refit filter and cage, ensure grooves in the bottom of the dirt bin engage with the tabs at the bottom of the unit.

Troubleshooting!

What's wrong....

My handheld will not work properly

- The battery is flat
- The battery charge is getting weak
- Want to know how to maintain your handheld

My handheld will not pick up dirt/water

- The dirt bin is full
- The filters are dirty
- The nozzle/crevice tool may be blocked

The charging indicator light is not lit during charge

- The mains adapter is not plugged in
- The handheld switch is on
- The battery is fully charged

Express Wet & Dry Handheld GUW-04

How to sort me out!

- Place your handheld on the charging base. Blue indicator light will show when charging
- Let the battery run until it stops. Place your handheld on charging base to charge
- Please visit thegenierange.co.uk or call 0844 811 22 80 for advice

- Empty the dirt bin
- Clean the filters
- Remove the obstruction

- Check if the plug and the mains adapter are fitted correctly
- Switch off your handheld
- Take your handheld off the charging base. It is now ready for use