

Express Steam GUV-03



Hello!

Let's begin your journey...



...it's easy with Genie

Getting started...

Hello from the clean Genie team!

Thanks for choosing us. We're here to make cleaning simple for you.

We're not about fuss, so of all our products are really straightforward and easy to use.

Just follow our quick steps to build it up and go.

We'd love to stay in touch, so please take a moment to **register your Genie** so we can let you know all about the fun stuff we do. Find us online at www.thegenierange.co.uk for lots more info and tips, or if you get stuck call our Helpline on **08448 11 22 80**.

Now open the page and we'll have your Express Steam up and running in minutes. **Enjoy!**



Safety information

When using the steam cleaner, basic safety precautions should always be observed, including the following:

 **Warning:** The steam cleaner floor head gets very hot during operation.

 **Warning:** Danger of scalding. Avoid contact with steam.

1. Do not leave the appliance unattended when it is switched on. Unplug the appliance from the electrical socket before carrying out any maintenance or troubleshooting checks and before you fill/empty the water tank.
2. The appliance must be kept out of children's reach and should not be used by children.
3. In order to ensure safety, the appliance should only be assembled, connected and operated as set out in the instructions. Only use accessories, which are recommended by manufacturer.
4. This appliance is not intended for use by persons (including children) with reduced physical, sensory or mental capabilities, or lack of experience and knowledge, unless they have been given supervision or instruction concerning the use of the appliance by a person responsible for their safety.
5. Examine the appliance before use in order to detect signs of damage. Do not operate if the appliance, its power cord or plug, show any signs of damage. In order to comply with safety regulations and to avoid hazards, qualified personnel must carry out repairs of electrical appliances. If repair is needed contact the clean Genie team.
6. Do not use the steam cleaner if it has been dropped, damaged, left outdoors or dropped into water.
7. Check the appliance and the cord before each use.
8. Do not unplug by pulling on the cord.
9. Do not handle the plug or steam cleaner with wet hands.
10. After use unplug the appliance from the electrical socket.
11. When the appliance is in operation, the floor head should not be directed toward humans, animals or plants.
12. Never immerse the appliance in water or other liquid.
13. Only use water in this appliance. De-scaling products, perfume, detergent etc. should not be used with this appliance, in order to avoid damage.

**Please only use in your home.
Keep instructions for future reference.**


14. Turn off all controls before unplugging.
15. Store indoors and put away after use to prevent tripping accidents.
16. Using improper voltage may result in damage to the motor and possible injury to the user. The correct voltage is listed on the rating label.
17. A hazard may occur if the steam cleaner runs over the power cord.
18. Do not use the steam cleaner on leather, wax, polished furniture or floors, synthetic fabrics, velvet or other delicate steam sensitive materials.


Note: If the power cord is damaged it must be replaced by the manufacturer, or a similarly qualified person in order to avoid a hazard, or invalidating the guarantee.

Note: Before performing cleaning or maintenance tasks and after each use, unplug the appliance from the electrical socket and let it cool down sufficiently.

Note: Steam must not be directed towards equipment containing electrical components, such as the interior of ovens.


 **Warning:**  Danger of scalding.

 **Warning:** The appliance heats up during operation, therefore only touch handle or buttons. Always let the appliance cool down before attaching or removing accessories

 **Warning:** Never try to modify or change the mains plug of the appliance. Make sure that the supply voltage corresponds to the voltage marked on the rating label of the appliance.

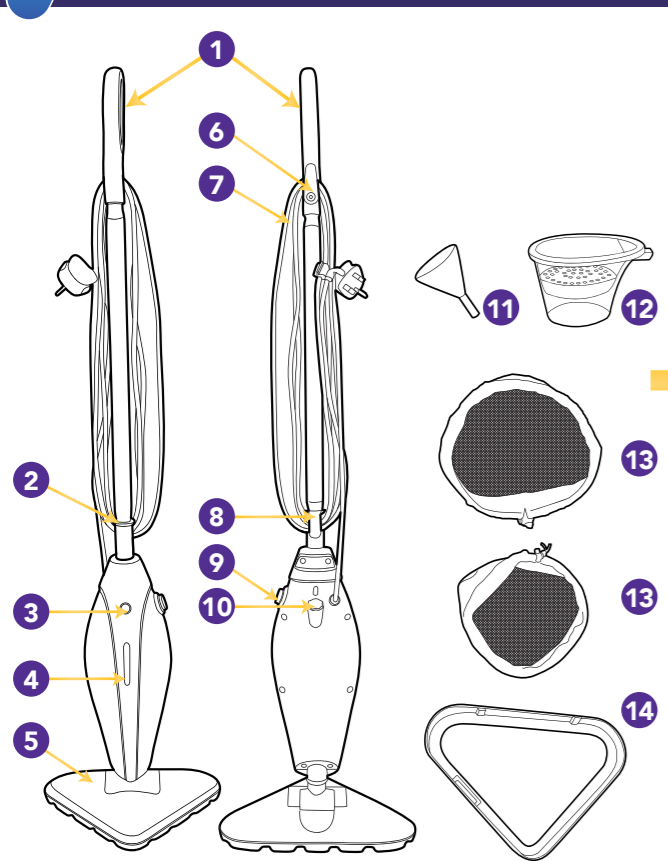
EEC Statement of Compliance 

Manufacturer/EEC importer: Genie hereby on our own responsibility, declare that the GUV-03 series is manufactured in compliance with the following Directives: Safety: 2006/95/EC Low Voltage Directive, EMC: 2004/108/EC Electromagnetic Compatibility Directive

Disposal  This product should not be disposed of with the house-hold waste. Please recycle where facilities exist. Check with your Local Authority or retailer for recycling advice.

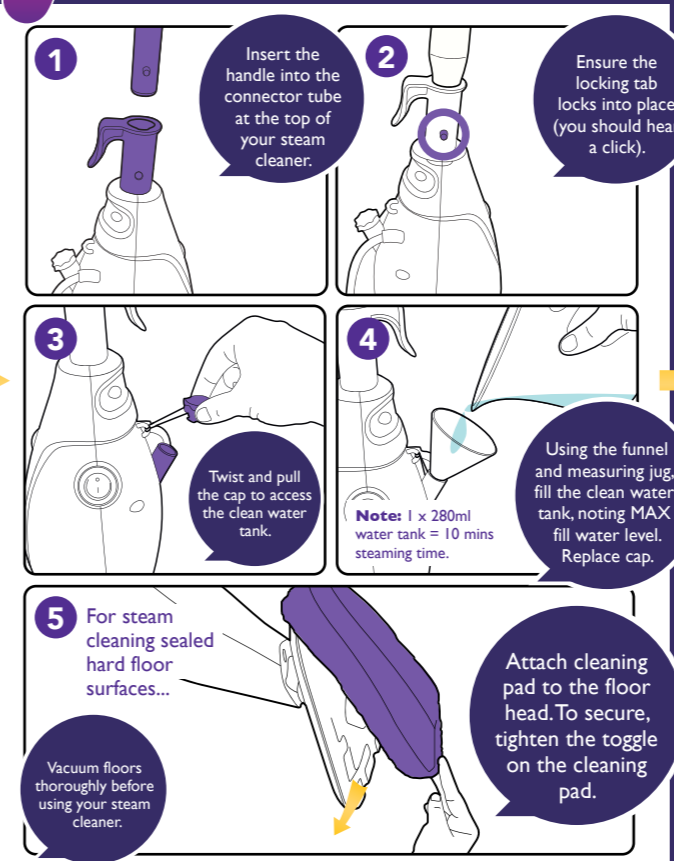


What's in the box?



- 1 Handle
- 2 Connector tube
- 3 Power light (green)
- 4 Clean water tank
- 5 Floor head
- 6 Upper cord wrap
- 7 Power cord
- 8 Lower cord wrap
- 9 On/off button
- 10 Clean water tank cap
- 11 Funnel
- 12 Measuring jug (inc. hard water filter)
- 13 Microfibre cleaning pads
- 14 Carpet glider

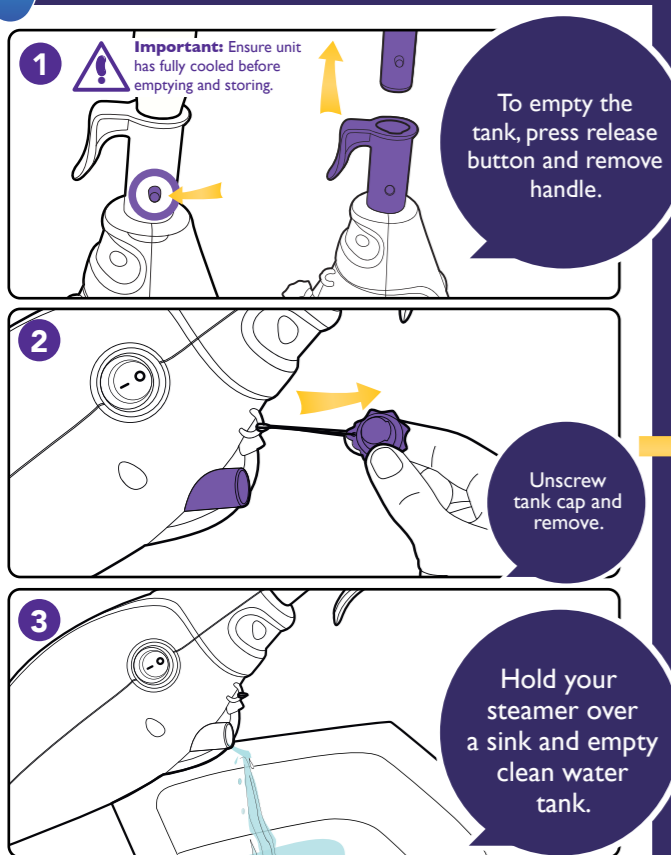
Build me up!



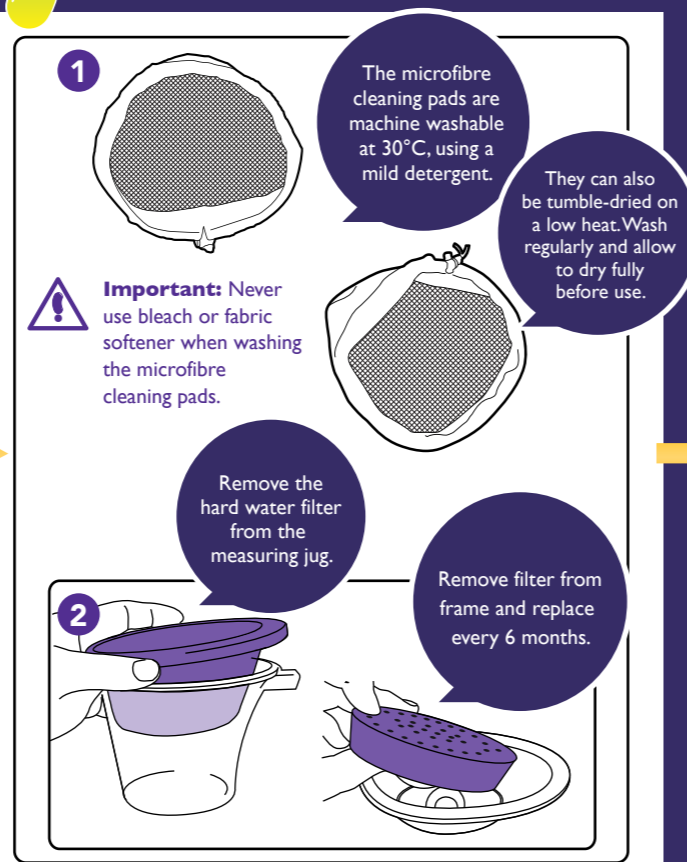
It's as easy as...



Empty me!



Look after me!



Troubleshooting!

What's wrong...

My steamer will not work properly

- The steamer is not plugged in correctly
- Either the fuse has blown or circuit in your home has tripped
- If the red light is on, the water tank is empty
- Want to know how to maintain your steamer

My steamer will not produce steam

- There may be no water in the tank
- The steamer may not be switched on

The cleaning pad will not pick up dirt

- Cleaning pad may be saturated with dirt

Express Steam GUV-03

How to sort me out!

- Push the plug in firmly
- Check and replace the fuse or reset the circuit
- Turn steamer off and refill water tank
- Please visit thegenierange.co.uk or call 0844 811 22 80 for advice
- Refill clean water tank
- Check the plug and switch the steamer on
- Wash my microfibre cleaning pad