

Vax Ltd., Kingswood Road, Hampton Lovett, Droitwich, Worcestershire WR9 0QH, UK
email: info@vax.co.uk - website: www.vax.co.uk

Waste electrical products should not be disposed of with household waste. Please recycle where facilities exist. Check with your Local Authority or retailer for recycling advice.

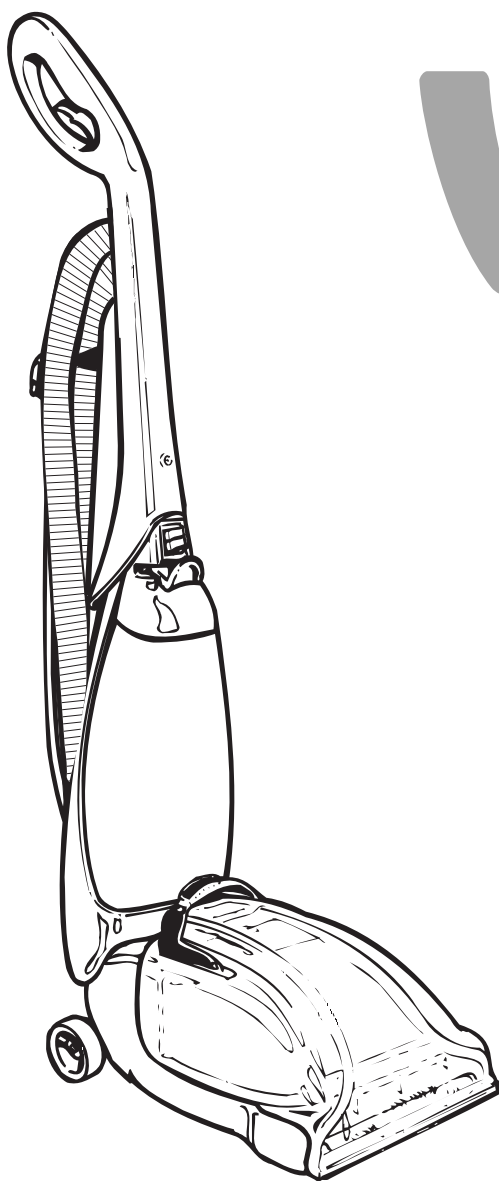


EMC: 89/336/EEC Electromagnetic Compatibility Directive

Safety: 73/23/EEC Low Voltage Directive

Manufacturer/EEC importer: Vax Limited, hereby on our own responsibility, declare that the product V-026PT is manufactured in compliance with the following Directives:

EEC STATEMENT OF COMPLIANCE



vax®

Easy Guide

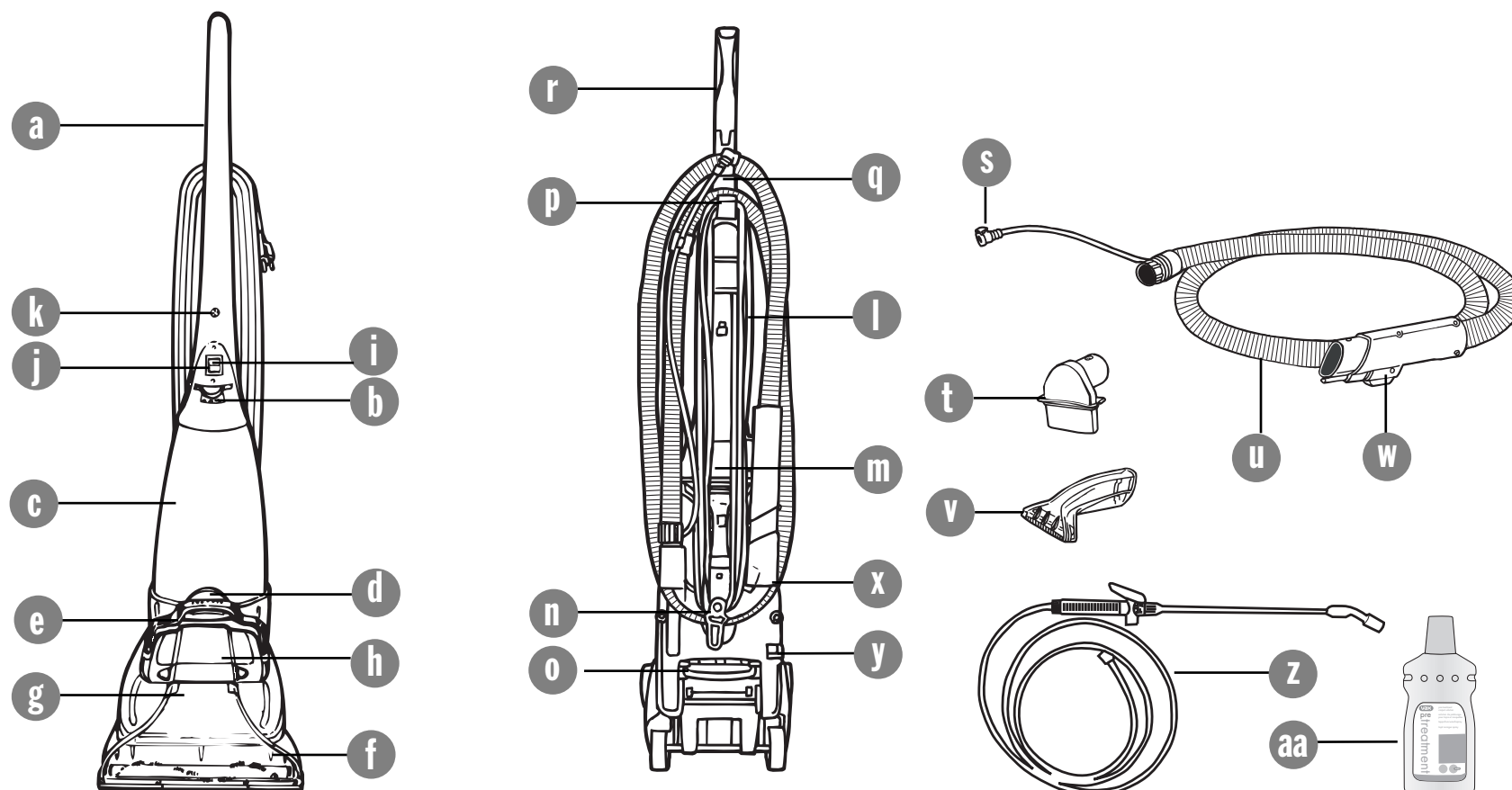
Rapide
carpet washer *Deluxe*
pre-treatment

UK SERVICE & HELP - VAX CARE 0870 6061248

Mon-Fri. 9.00am to 5.00pm. An answer phone is available out of these hours. If you have queries or concerns about using your VAX, call the HELPLINE. Calls are charged at the UK national rate. Please make a note of the serial number and model number of your VAX before calling. There are over 400 approved VAX Service Agents in the UK. For your nearest Service Agent please call VAX Care.

Parts checklist

2

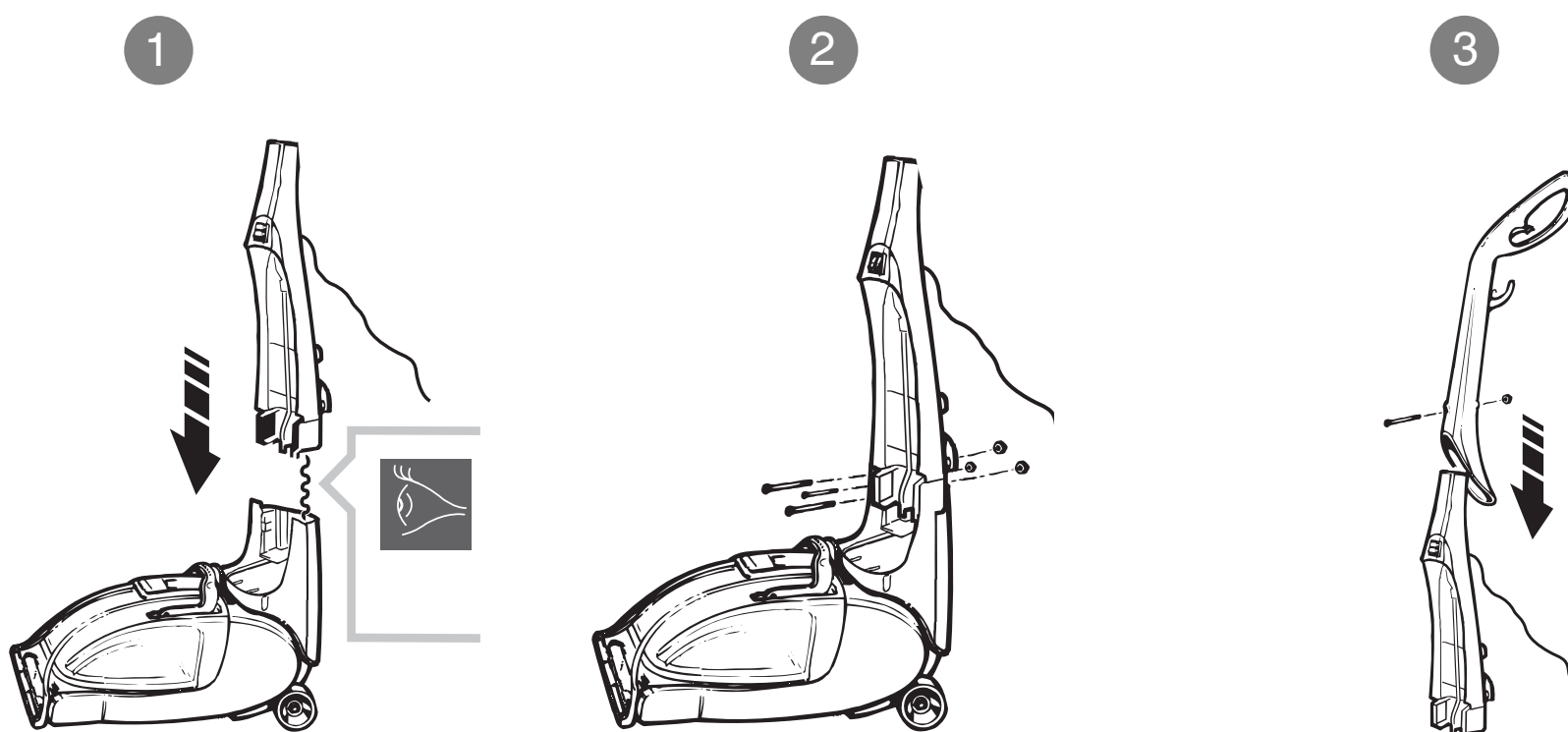


- | | | | | | |
|---|--------------------------------|---|--------------------------|----|------------------------------|
| a | Handle | j | Vacuum on/off switch | s | Upholstery water supply plug |
| b | Clean solution reservoir latch | k | Handle screw | t | Upholstery hose adaptor |
| c | Clean solution reservoir | l | Power cord | u | Upholstery hose |
| d | Dirty water tank latch | m | Carrying handle | v | Upholstery attachment |
| e | Dirty water tank handle | n | Quick cord release | w | Upholstery trigger |
| f | Rotating brush bar | o | Handle release pedal | x | Tool caddy /storage |
| g | Dirty water tank | p | Cord hook | y | Water supply socket |
| h | Dirty water tank lid | q | Cord clip | z | Pre-treatment wand |
| i | Brush bar on/off switch | r | Solution release trigger | aa | Pre-treatment solution |

Putting your cleaner together

Phillips screwdriver required

3



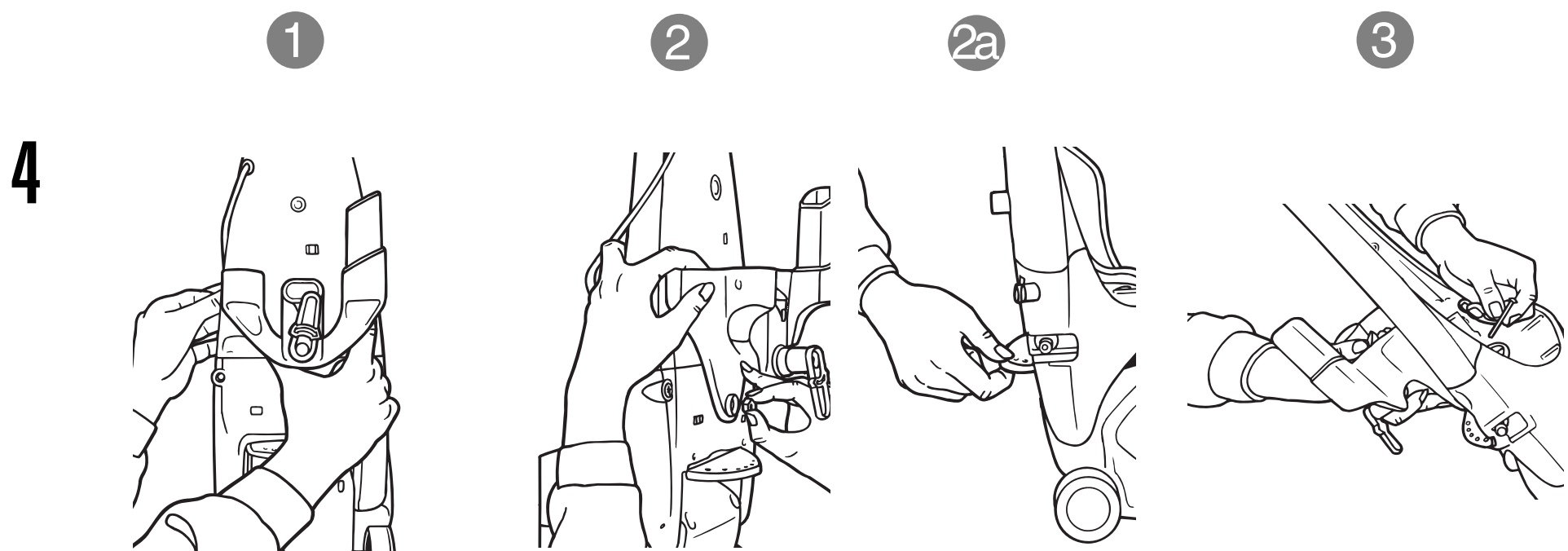
Stand the base in the upright position. Assemble the mid section onto the base, taking care not to trap internal mains wire.

Insert the two nuts into the recesses located on the left and right sides of the base. While holding the nuts in place, insert the two medium length screws through the front of the mid section and tighten.

Slide the upper handle down onto the unit. Insert the nut into the recess in the back of the upper handle. While holding the nut in place, insert the long screw through the front of the upper handle and tighten. Run the mains wire above the upper cord hook and secure with the cord clip.

Tool caddy assembly

Phillips screwdriver required

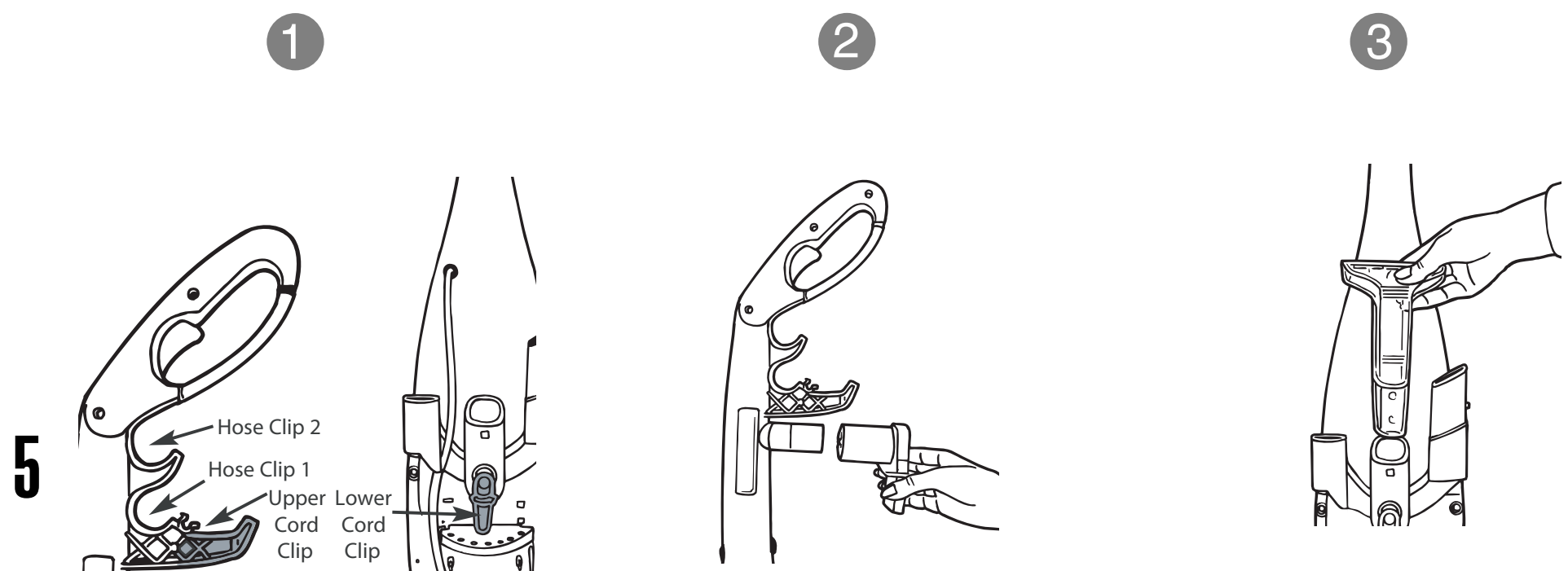


Align tabs on tool caddy with slots on midsection and snap into place.

Place nut into recess on tool caddy and hold into place (2). Press handle release with your other hand to tilt the midsection backwards (2a).

Place screw through centre of lower midsection and tighten.

Tool caddy use



Wrap the cord around the upper and lower cord clips.

Detach the Upholstery hose adaptor from the end of the hose and slide it onto the adaptor post.

Slide the Upholstery attachment into the middle slot of the lower tool caddy.

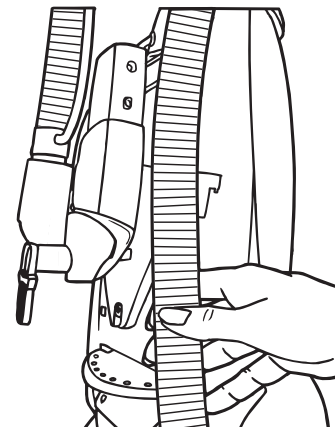
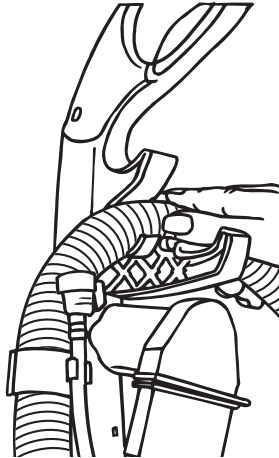
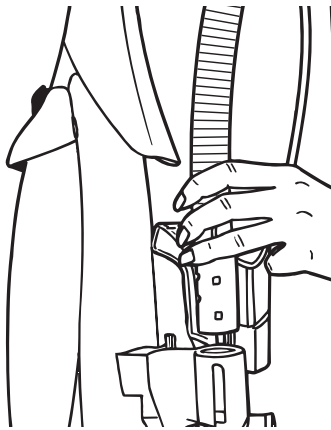
Tool caddy use

4

5

6

6



Slide the adaptor end of the hose into the left slot on the lower tool caddy. Be sure to line up the pushpin with the slot and press down until secure in place.

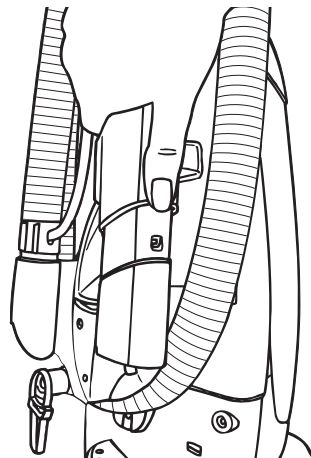
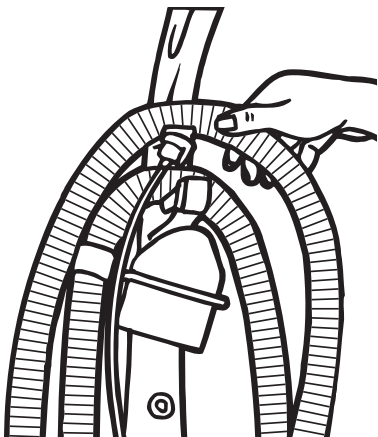
Run the hose to the upper caddy and press into hose clip #1 (1).

Continue wrapping the hose clockwise around the tool caddies, pressing the hose into the groove on the bottom of the lower tool caddy.

7

8

7

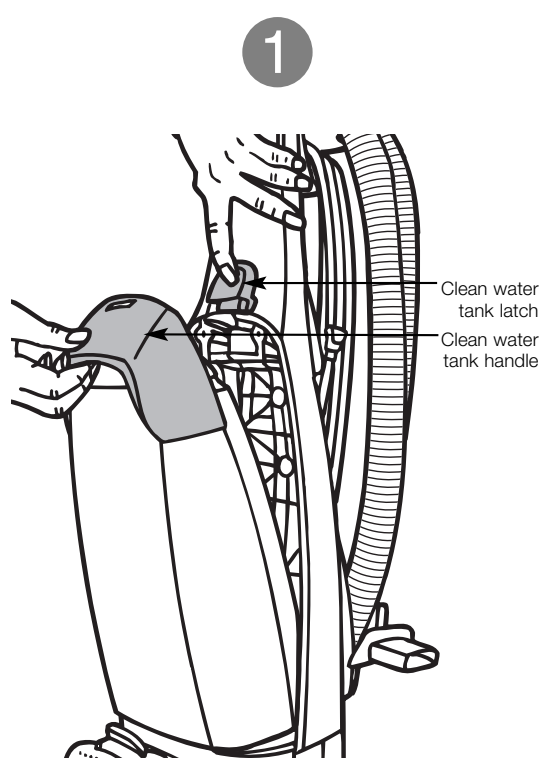


Run the hose back to the upper caddy and press into hose clip #2 (1).

Lock the attachment end of the hose into place by pressing down onto the post located on the right side of the lower tool caddy, until secure in place.

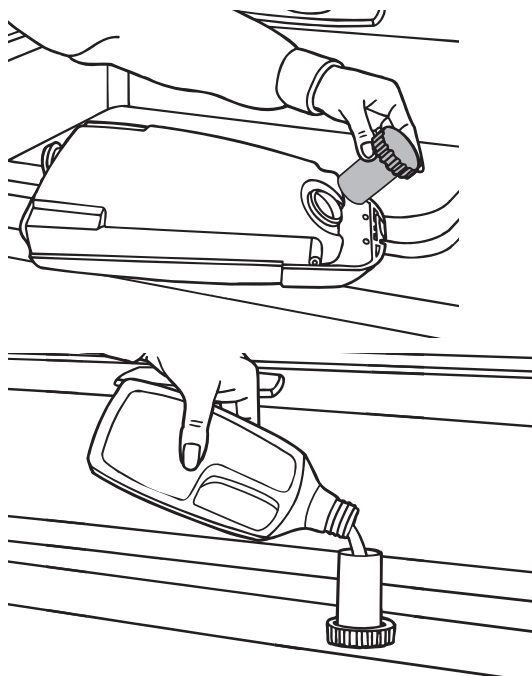
Pre-treating your carpet

8



Grasp the clean water tank under the handle while pressing the clean water tank latch. Tilt the clean water tank away from the carpet washer and remove.

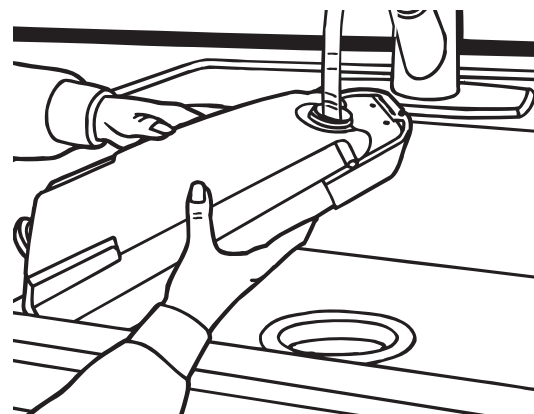
2



Unscrew the measuring cap from the back of the clean water tank.

Fill the measuring cap with the pre-treatment solution (approximately 3 capfuls per litre of clean water). Pour into the clean water tank.

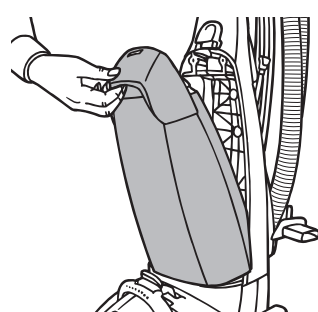
3



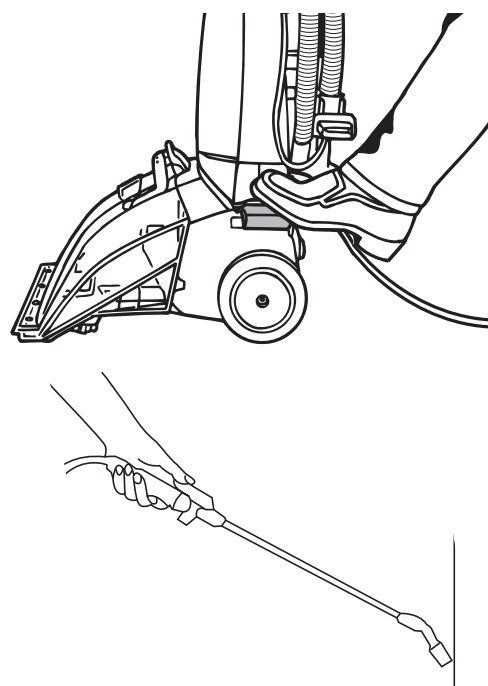
Caution: Maximum water temperature 40°C

Fill the remainder of the clean water tank with warm (max 40°C) tap water. Replace the cap.

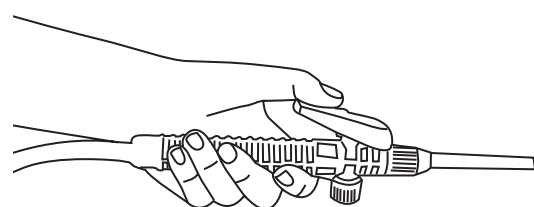
4



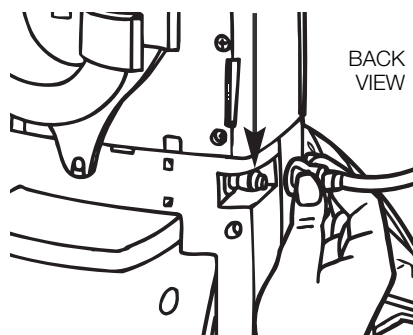
5



6



9



Place the bottom of the clean water tank into the carpet washer and rotate top into position until the clean water tank latch snaps into place.

Attach the pre-treatment wand to the water supply port and press firmly until it locks into place.

To pre-treat your carpet, step on the power on/off pedal to turn the cleaner on.

Using the wand and the trigger, apply the pre-treatment solution to your carpets. Turning the spray nozzle clockwise or anti-clockwise will alter the spray pattern.

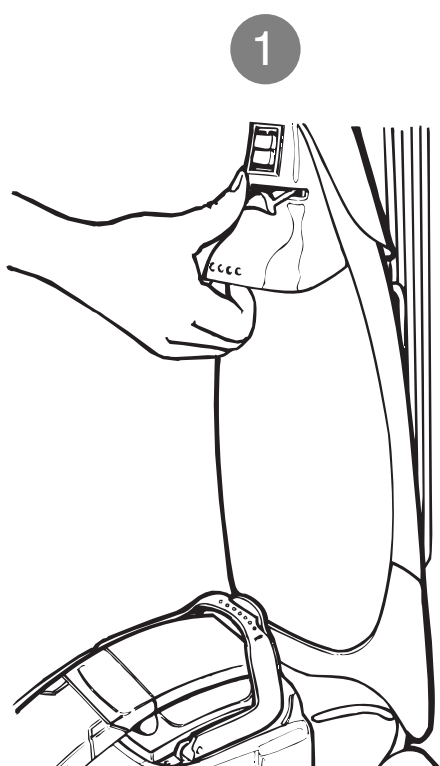
Releasing the trigger will stop the solution flow. The treated areas should be left for 10 to 15 minutes. For heavy stains, mild agitation may be used.

Note: Do not over wet carpets.

Note: Once your carpets have been pre-treated, rinse the clean water tank and clean your carpets with Vax AAA Carpet Cleaner as directed.

How to operate your cleaner

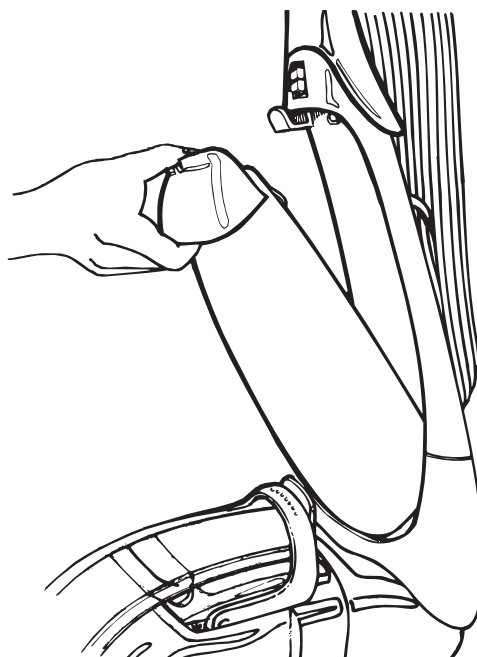
10



Important: Turn off when emptying and filling the reservoir.

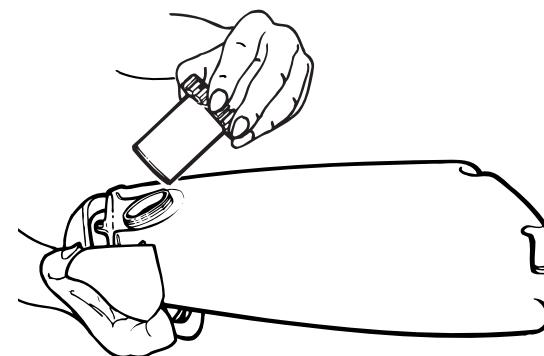
Grasp the solution reservoir under the handle and press the handle release lever upward.

2



Tilt the solution reservoir away from the cleaner and remove.

3



Unscrew the filler/measure cap from the rear of the solution reservoir.

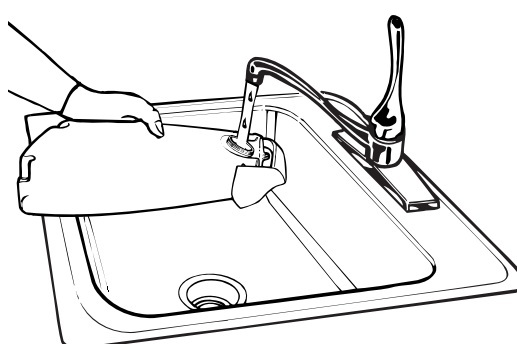
How to operate your cleaner

11



Fill the bottle cap or measure cap 3 times with VAX AAA carpet cleaning solution and pour into the reservoir.

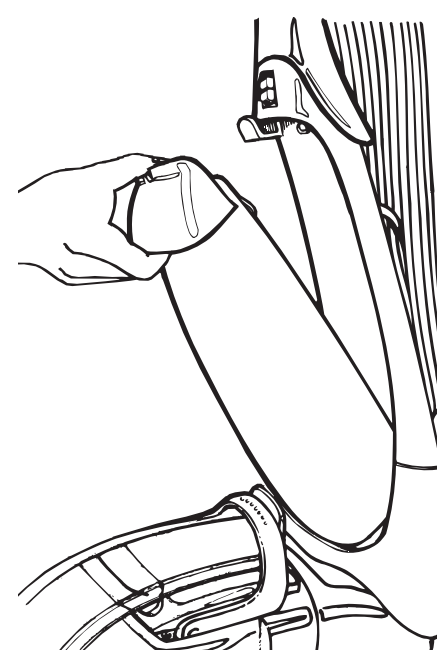
5



Caution: Maximum water temperature 40°C
Fill the remainder of the clean water tank with warm (max 40°C) tap water. Replace the cap.

Note: use only VAX AAA cleaning solution, using other cleaning solutions may cause excessive foaming. This may cause the float to shut off the cleaner prematurely. Using other cleaners will void your warranty.

6

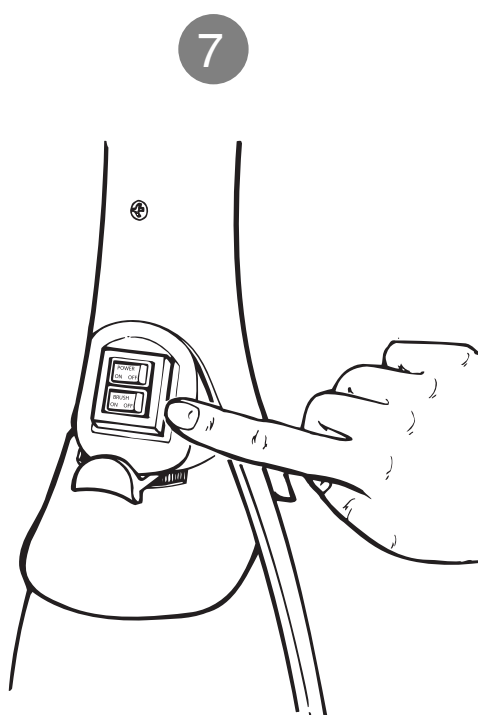


Place the bottom of the solution reservoir into the cleaner and push into place. There will be an audible click when the reservoir is in the correct position.

How to operate your cleaner

Important: Never leave the cleaner unattended with the power on.
Vacuum carpets thoroughly with dry vacuum cleaner before washing.

12



Plug the cord into a mains electricity socket. Turn the power and brush bar switches on. The switches are located on the front of the cleaner, above the solution reservoir.

The power switch controls the vacuum motor and pump, the brush switch only turns the rotating brush bar on and off when the power switch is on.



Press on the handle release pedal and pull the cleaner back into a reclined position.



While pressing the solution release trigger, pull the cleaner in a backward motion. Release the trigger and push forward in the same path to remove the dirty water and solution from the carpet. Repeat if necessary, when the dirty water reaches the max fill line on the dirty water tank, empty the tank.

Hose Attachments

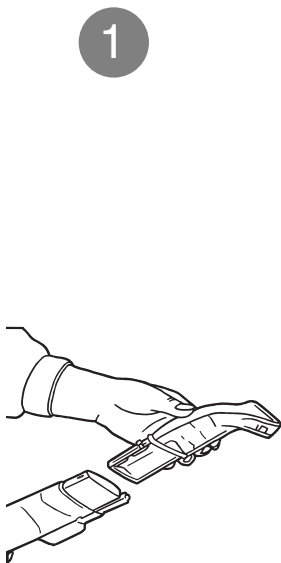
NOTE: DO NOT OVERSATURATE THE UPHOLSTERY

IMPORTANT: FOR BEST CLEANING RESULTS USE STEADY, MODERATE, FORWARD AND BACKWARD MOTION.

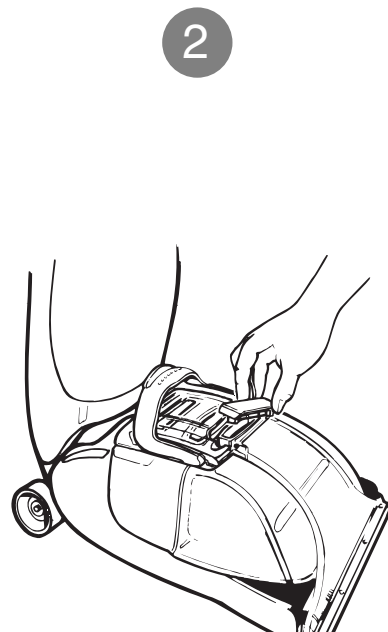
Make sure upholstery is dry before use.

NOTE: If the hose attachment door is not replaced, there will be no suction through the nozzle and the unit will not operate properly.

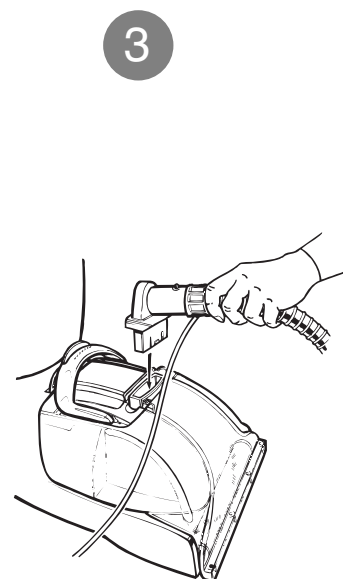
13



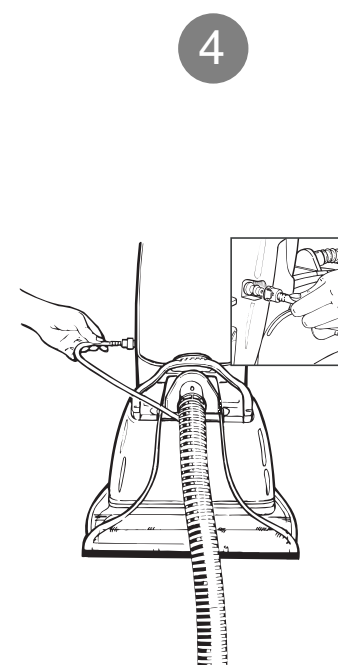
Put cleaner in its upright position. Remove tools from storage caddy. Assemble as shown. Connect the upholstery attachment to the trigger adaptor.



REMOVE THE TANK DOOR from the top of the dirty water tank.



Insert the hose adaptor into the top of the dirty water tank.



Connect the hose water supply plug into the socket on the lower left side of the cleaner.

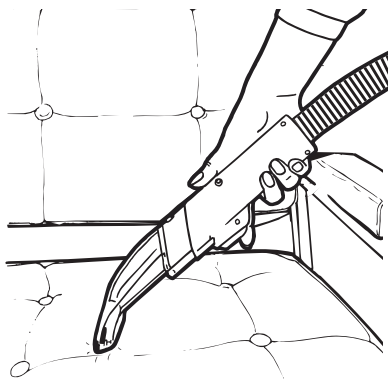
Using the hose attachment

Storing tools

Carry handle

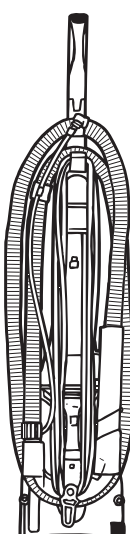
14

1



Turn power switch on and brush switch off. While depressing the solution spray trigger, pull attachment in backward motion. Release trigger and push attachment forward in same path to remove dirty water and solution from upholstery. (For heavily soiled areas, repeat if necessary).

1



Place hose and upholstery attachments into their storing locations (page 7). Store for next use.

1

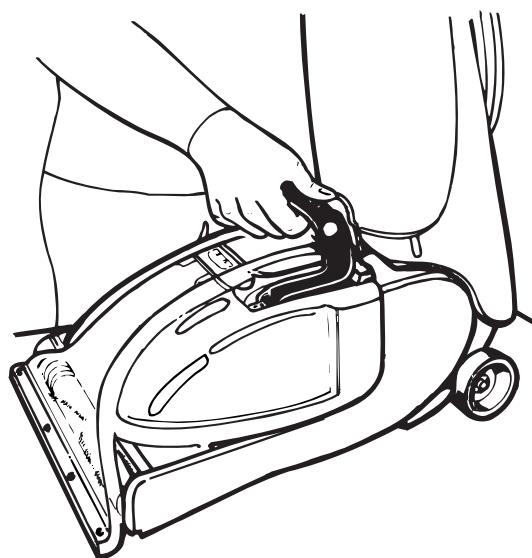


Grasp the handle on the back of the unit to move unit from room to room.
NOTE: DO NOT TRANSPORT THE CARPET WASHER WITH EITHER THE SOLUTION RESERVOIR OR DIRTY WATER TANK FULL.

Emptying the dirty water tank

Note: The float in your Rapide is the blue piece in the dirty water tank lid, it will shut off the suction when the dirty water tank is full. For best results, use a smooth steady motion, keeping the nozzle flat against the carpet. Tipping the cleaner and breaking the seal of the nozzle against the carpet will cause the float to rise cutting off suction. Once the float is activated, empty the dirty water tank. If the tank does not appear full, turn off the power switch and wait for the float to settle. For best results use only Vax AAA cleaning solution.

1

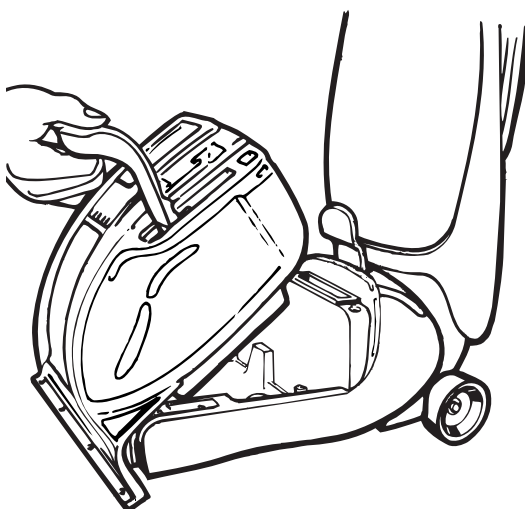


15

You will hear a distinct change in the noise coming from your cleaner when the tank is full and needs emptying.

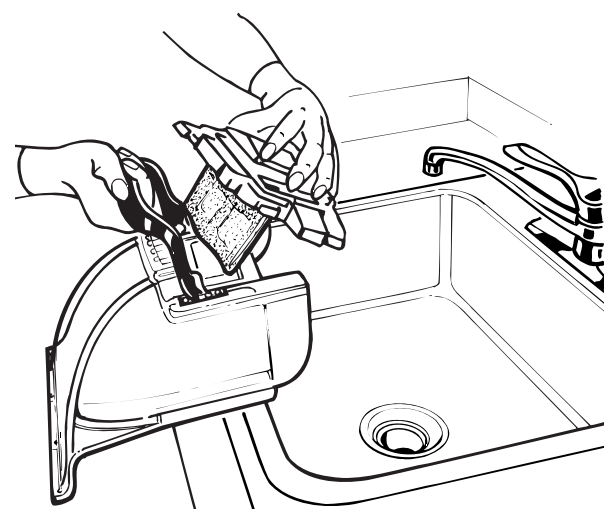
Important: Unplug your cleaner before emptying the dirty water tank. Grasp the top of the dirty water tank handle and press the release latch.

2



Grasp the handle and pull up out of the base, take care to ensure that no dirty water leaks from the front.

3

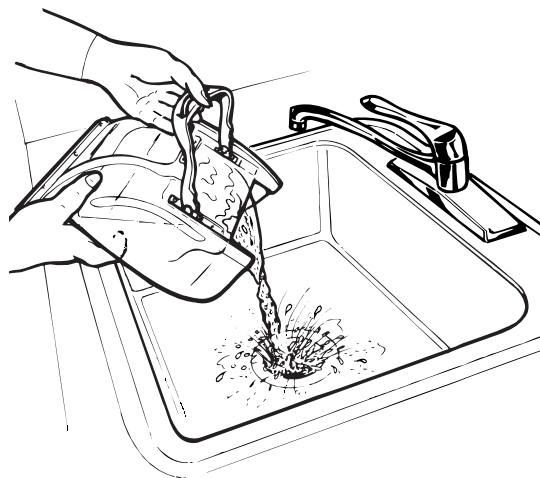


Remove dirty water tank lid.

Emptying the dirt water tank

4

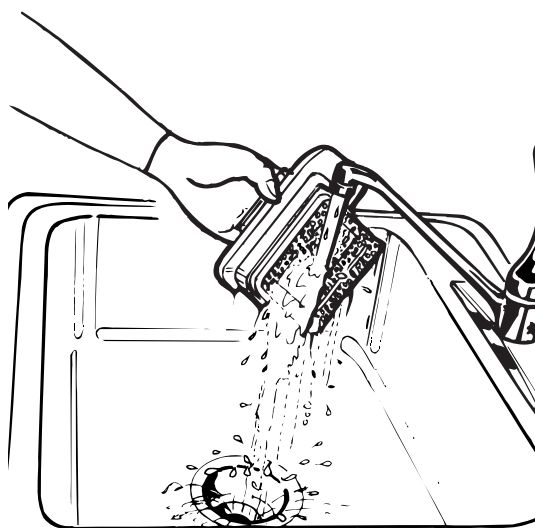
16



To empty the water tank grasp the handle with one hand and the nozzle with the other and empty into the sink.

Cleaning the dirty water tank

5

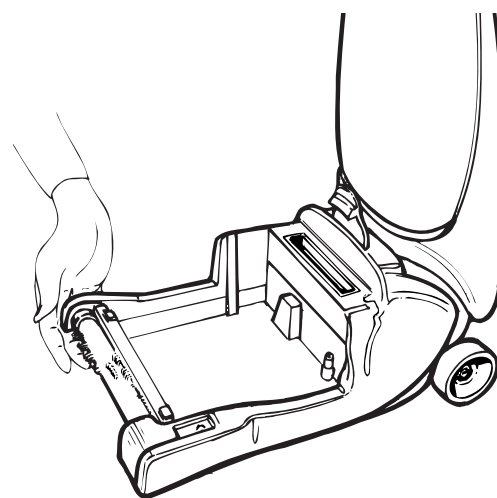


Rinse the dirty water tank and filter thoroughly with warm water. You should allow them to dry fully before replacing them on your cleaner to prevent mildew.

Do not use any chemicals in the cleaning process.

Replacing the dirty water tank

6

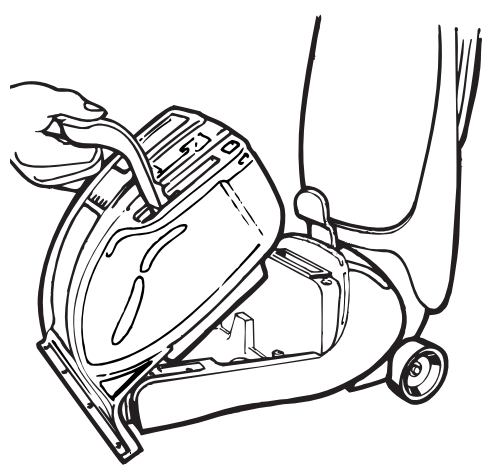


Lift the front of the carpet cleaner base off the carpet with one hand.

Emptying the dirty water tank

7

17

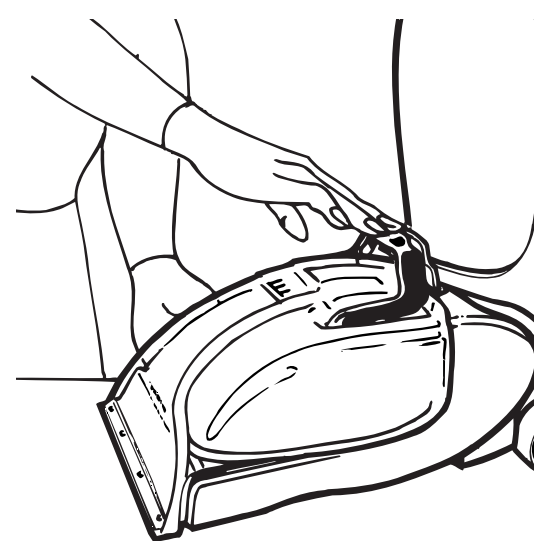


Grasp the handle and hook the front of the dirty water cleaner into the base, making sure that the front of the dirty water tank is resting on the base.

The dirty water tank has three tabs on the underside which **MUST** latch on to the underside of the base of the cleaner. The base must be lifted so that the nozzle is flush with the base of the cleaner.

Failure to install the dirty water tank correctly will result in poor dirty water pick up.

8



While making sure the dirty water tank is resting on the base, place the rear of the tank into the base of the cleaner, push down on the handle until it latches.

Empty and rinse clean the water tank after use.

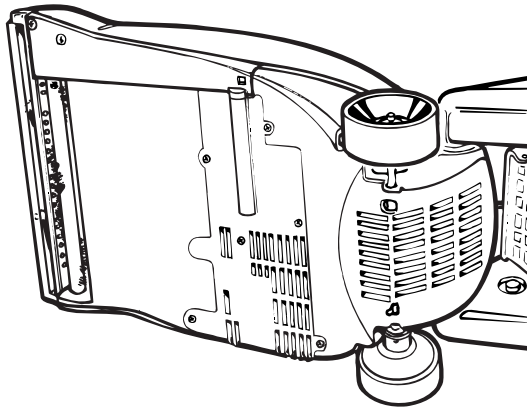
Belt or brush removal and replacement

Phillips screwdriver required

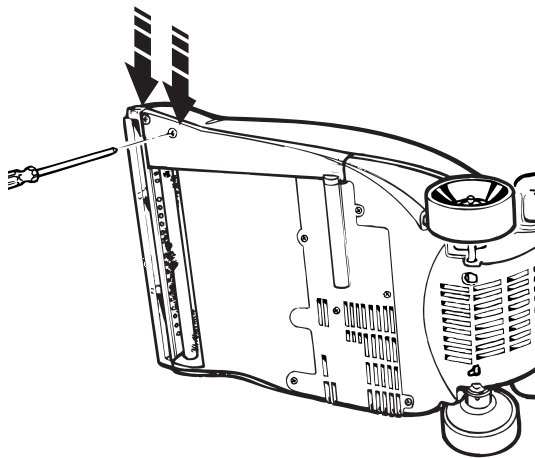
The plug must be removed from socket outlet before cleaning or maintaining the appliance.

18

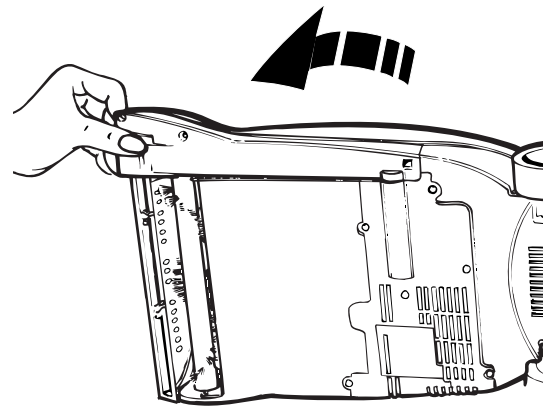
1



2



3



Remove the water tank switch off and unplug the carpet washer.

Flip the cleaner on it's side to expose the nozzle base.

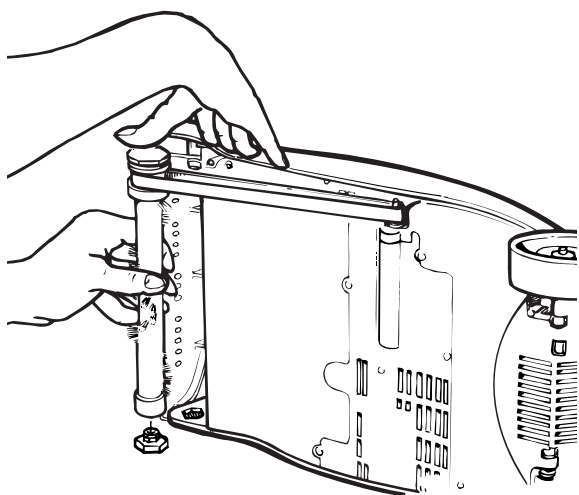
To remove the belt cover, use a phillips screwdriver to remove the two screws.

Grasp the belt cover near the belt roll and lift out.

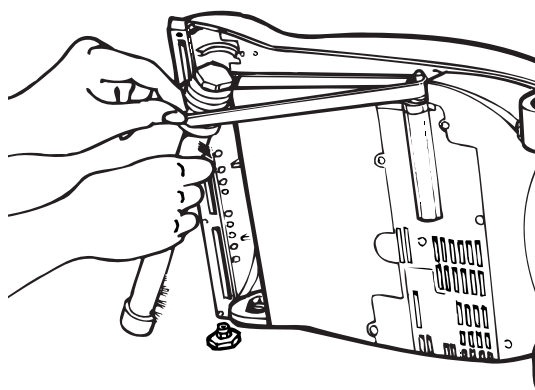
Belt or brush removal and replacement

19

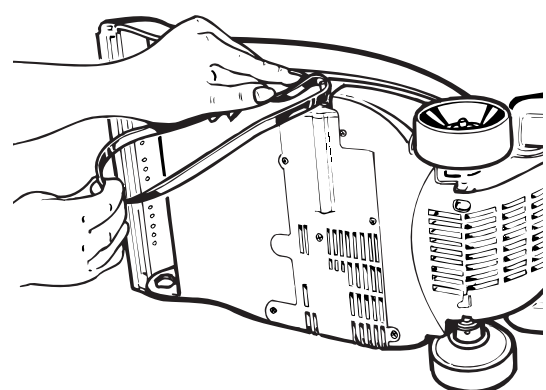
4



5



6



Grasp the brush bar with one hand, using the other hand to keep tension on the the belt while removing.

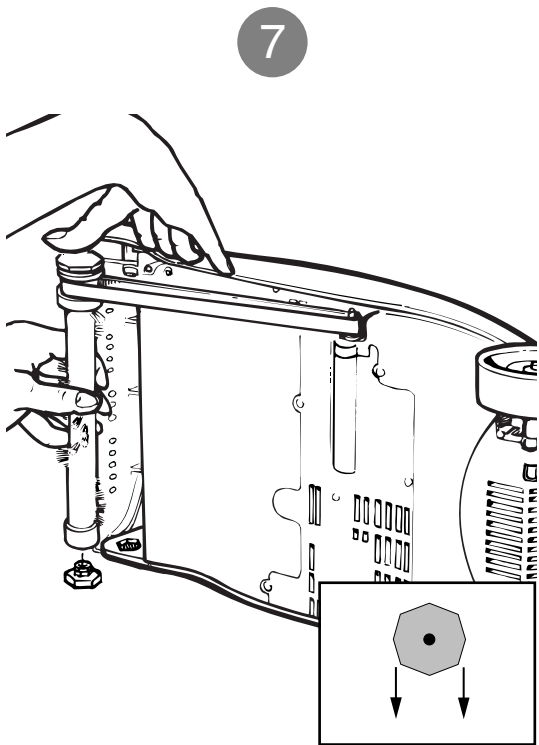
Lift up while you're pulling it out

Slide the belt off the the motor shaft and dispose.

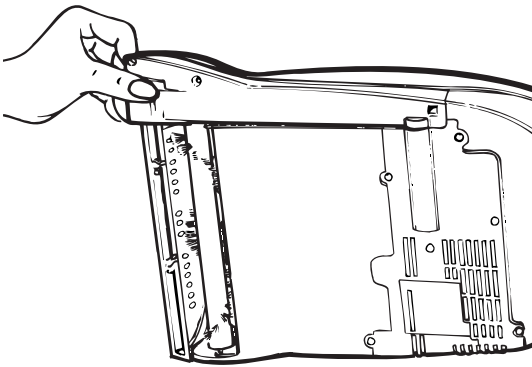
Belt or Brush removal and replacement

Phillips screwdriver required

20



8



When replacing the belt, first slide it onto the motor shaft. Then slip the brush bar through the belt. Place the belt in the area of the brush without bristles. Slide the brush bar into the nozzle, ensuring that the brush bar end caps are orientated correctly, see inset picture. Manually turn the brush bar to check that it is fitted properly.

Replace the belt cover by inserting the end furthest from the brush first. Then replace the front of the belt cover before securing in place with the two screws.

Troubleshooting

Problem	Possible Cause	Possible solution
Cleaner won't run	<ul style="list-style-type: none">• Power cord not firmly pushed into a mains socket.• Blown fuse or tripped circuit breaker.	<ul style="list-style-type: none">• Plug cord in firmly.• Check fuse/breaker. Replace fuse or reset breaker.
Vacuum won't pick up/ loss of suction	<ul style="list-style-type: none">• Dirty water tank is not installed correctly.• Dirty water tank is full.• Broken or worn belt.• Brush bar is worn.• Nozzle/dirt passage is clogged.	<ul style="list-style-type: none">• Refer to page 15 for fitting information.• See 'Emptying the dirty water tank'.• Replace the belt.• Replace the brush bar.• Remove obstruction.
Dust escaping from the vacuum	<ul style="list-style-type: none">• Dirty water tank is full.• Dirty water tank is not installed properly.• Solution reservoir not installed correctly.	<ul style="list-style-type: none">• Empty dirty water tank.• See 'Emptying the dirty water tank'.• See 'How to operate your cleaner'.
Cleaner won't dispense solution	<ul style="list-style-type: none">• Solution reservoir not installed correctly.• Solution tank empty.	<ul style="list-style-type: none">• See 'How to operate your cleaner'.• Fill tank see page 8 and 9.

21

22

Safety

- Do not leave the appliance when plugged in. Unplug it from socket when not in use.
- To prevent electric shock do not use outdoors
- Not to be used as a toy. Close supervision is necessary when used by or near children or the infirm.
- Use only as described in this user guide.
- Do not use with a damaged cord or plug.
- Do not pull or carry by the cord, use the cord as a handle, allow the cord to come into contact with hot or sharp surfaces or close a door on the cord.
- Do not unplug by pulling on the cord.
- Do not handle the plug or appliance with wet hands.
- Do not put any objects into openings or operate with openings blocked, keep them free of anything that may reduce airflow.
- Keep hair, loose clothing, fingers, and all parts of the body away from openings and moving parts.
- Do not vacuum any glowing, burning or smoking particles.
- Do not use without the solution reservoir and dirty water tank in place.
- Turn off all controls before unplugging.
- Do not use to pick up flammable or combustible liquids such as petrol, or use in areas where they may be present.
- Keep the carpet washer on the floor.
- Do not use an extension cord with this carpet washer.
- Do not attempt to remove blockages with sharp objects as they may cause damage.
- Store the carpet washer indoors. Put the carpet washer away after use to prevent tripping accidents.
- Using improper voltage may result in damage to the motor and possible injury to the user. The correct voltage is listed on the ratings plate.
- If the supply cord is damaged, it must be replaced by the manufacturer, its service agent or similarly qualified persons in order to avoid hazard.
- This carpet washer is intended for household use only.
- **This is not a dry vacuum cleaner, carpets should be thoroughly vacuumed prior to washing with the Rapide Deluxe.**

For further information in the UK, call the VAX HELPLINE : 0870 606 1248

This page has been left intentionally blank.